

Wabo®SeismicSafetyFlex

Heavy Duty Seismic Expansion Control System (Patent Pending)

Features	Benefits
<ul style="list-style-type: none"> •Accommodates wide openings 	Standard systems designed for joint openings up to 12 inches.
<ul style="list-style-type: none"> • Multi-directional movement 	System maintains functionality during seismic events.
<ul style="list-style-type: none"> • Sound Attenuation 	Rubber encapsulated metal plates eliminates the loud noise associated with most metal cover plate systems.
<ul style="list-style-type: none"> • Durability 	Metal plates are encapsulated inside a molded rubber cover protecting the material from deterioration.



DESCRIPTION:

The Wabo®SeismicSafetyFlex system is an elastomeric molded cover plate system recommended for wider joint openings exposed to heavy loading or when design considerations call for the ability to accommodate multi-directional seismic movement. Independent metal plates integral to the rubber cover, allows the system to flex in response to changes in vertical displacement between opposing sides of the expansion joint. SSF model complies with ADA guidelines.

RECOMMENDED FOR:

For use in various construction projects including:

- Parking Decks
- Plaza Decks
- Airports
- Convention Centers
- Hospitals
- Residential
- Commercial Buildings
- Interior/Exterior Applications

PACKAGING/COVERAGE:

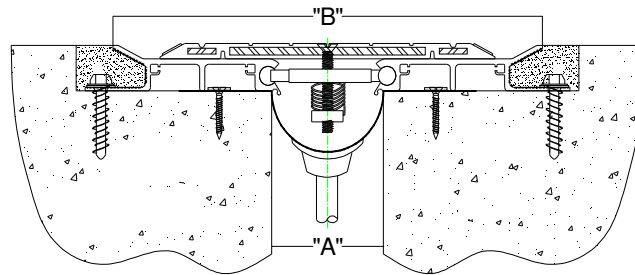
- Aluminum Profiles: Standard 10 ft. lengths
- Moisture Barrier: Longest possible continuous length.
- Accessories: Packaged in manufacturer's standard label carton.
- Shipped on an 11 foot pallet



TECHNICAL DATA:

Design Information:

The SSF model cover plates are recessed allowing it to be out of harms way. The Wabo®SeismicSafetyFlex has a fabric reinforced neoprene sheet good as it's heavy-duty moisture barrier and when combined with the optional drain tubes can effectively channel water away from the expansion joint location. There are 3 standard models in this product line. The SSF-200/400 is used for 2" and 4" nominal openings, the SSF-600/800 is used for 6" and 8" nominal openings and the SSF-1000/1200 is used for 10" and 12" nominal openings. When WaboCrete II Elastomeric Concrete is utilized as the edge void filler, it enhances the system's water resistant integrity. The spring loaded self-centering seismic devices allow the slide plate to return to its natural position after a seismic occurrence.



Note: see product sales drawings for additional details

Movement Table

Model Number	Joint Opening "A"						System Width "B" (@ mid)	
	Min.		Max.		Total		in	mm
	in	mm	in	mm	in	mm		
SSF-200/400	1.250	32	6.00	153	4.75	121	13.750	350
SSF-600/800	1.250	32	9.00	229	7.75	194	14.25	362
SSF-1000/1200	1.250	32	15.00	381	13.75	346	22.25	565

EPDM Rubber

PHYSICAL PROPERTY	ASTM TEST METHOD	REQUIREMENTS
Tensile Strength, min	D-412	1500 psi
Elongation at Break, min	D-412	350%
Hardness, Shore A	D-2240	60 +/- 5
Heat Resistance (70hrs@212°F)		
Tensile Strength, max	D-573	25%
Elongation, max		25%
Hardness, max		10 pts
Oil Resistance (70 hrs@212°F)		
Volume, max	D-471	120%
Ozone Resistance		
50 pphm for 72 hrs @ 104°F	D-518	100 rating
Compression Set		
22 hrs @ 212F, max	D-395	50%



PHYSICAL PROPERTIES:

Aluminum Extrusions and Shapes: Materials shall conform to properties of ASTM B221, 6063-T6 or ASTM B209, 6063-T6 aluminum alloy.

Self-Centering Bar: Manufactured incorporating Heavy Duty Stainless Steel springs and spherical ends.

Moisture Barrier (optional): Fabric reinforced neoprene sheetgood material. Minimum thickness shall be 0.060”.

Installation Summary:

- Blockouts must be made to the dimensions and elevations shown on the standard system drawings.
- Finish grade should be made perpendicular to the joint opening extending to 2 feet on each side of floor slab.
- Tolerance should be flush with zero vertical offset as determined by a 6 foot straight edge.
- Protect all expansion joint component parts from damage during installation.
- Expansion joint system should be set to proper width at the given ambient temperature at time of installation.
- Refer to WBA installation procedure for additional information.

Related Documents:

- Material Safety Data Sheets
- Wabo[®]SeismicSafetyFlex Specification
- Wabo[®]SeismicSafetyFlex CAD Drawings
- Wabo[®]SeismicSafetyFlex Installation Procedure

For Best Results:

- Install when concrete substrate is clean, sound, dry, and cured (14 day minimum). Follow International Concrete Repair Institute (ICRI) concrete repair and maintenance guidelines.
- Do not install if the joint's anticipated movement will exceed the system's movement range.
- Protect the work area with appropriate plastic sheeting.
- To ensure a watertight installation, Watson Bowman Acme recommends using WaboCrete II as the edge void filler.
- Minimize splice points by installing seals in longest possible continuous lengths.
- Do not allow any of the components to freeze prior to installation. Store all components out of direct sunlight in a clean, dry location between 50°F and 90°F.
- Periodically inspect the installed material and repair localized areas as needed. Consult a Watson Bowman Acme representative for additional information.
- Make certain the most current version of the product data sheet is being used. Please consult the website (www.wbacorp.com) or contact a customer service representative.
- Proper application is the responsibility of the user. Field visits by Watson Bowman Acme personnel are for the purpose of making technical recommendations only and not for supervising or providing quality control on the jobsite.



LIMITED WARRANTY:

Watson Bowman Acme warrants that this product conforms to its current applicable specifications. WATSON BOWMAN ACME MAKES NO OTHER WARRANTY, EXPRESS OR IMPLIED, INCLUDING ANY WARRANTY OF MERCHANTABILITY OR WARRANTY OF FITNESS FOR A PARTICULAR PURPOSE. The sole and exclusive remedy of Purchaser for any claim concerning this product, including, but not limited to, claims alleging breach of warranty, negligence, strict liability or otherwise, is the replacement of product or refund of the purchase price, at the sole option of Watson Bowman Acme. Any claims concerning this product shall be submitted in writing within one year of the delivery date of this product to Purchaser and any claims not presented within that period are waived by Purchaser. IN NO EVENT SHALL WATSON BOWMAN ACME BE LIABLE FOR ANY SPECIAL, INCIDENTAL, CONSEQUENTIAL (INCLUDES LOSS OF PROFITS) OR PUNITIVE DAMAGES. Other warranties may be available when the product is installed by a factory trained installer. Contact your local Watson Bowman Acme representative for details. The data expressed herein is true and accurate to the best of our knowledge at the time published; it is, however, subject to change without notice.

Contact

*Watson Bowman Acme, 95 Pineview Drive, Amherst, NY 14228
phone: 716-691-7566 / fax: 716-691-9239 / web site: <http://www.wbacorp.com>*

DOC#: WaboSSF_0507